

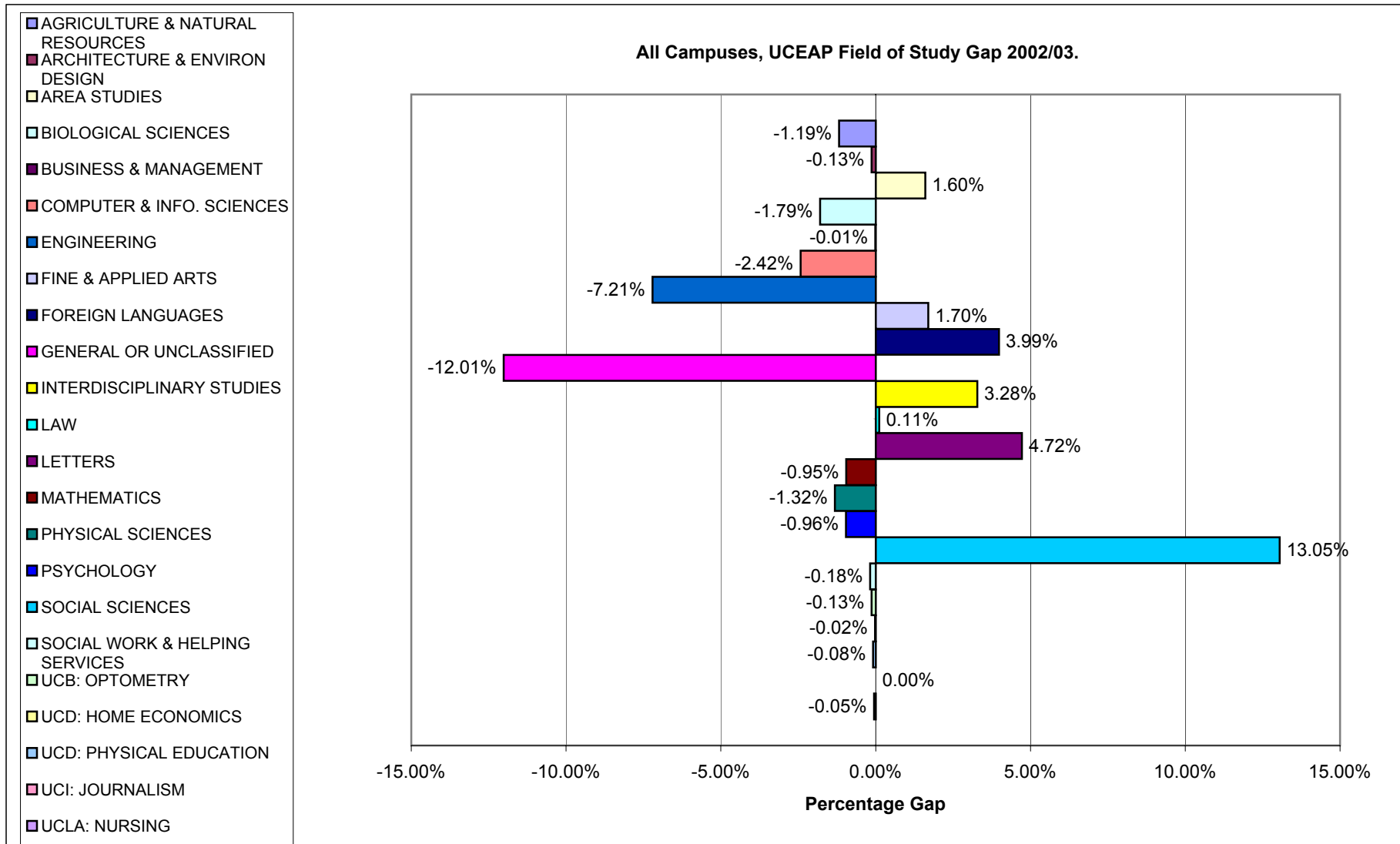
**UC Systemwide & UC EAP Upper Division Enrollment by Field of Study 2002/03.**

<b>Subject Area</b>	<b>Total Undergrad</b>	<b>UD SA as % UD Campus Total</b>		<b>EAP UD Enrollment</b>	<b>% EAP UD in SA</b>	<b>Gap</b>
AGRICULTURE & NATURAL RESOURCES	2799	2.21%		35	1.03%	-1.19%
ARCHITECTURE & ENVIRON DESIGN	815	0.63%		17	0.50%	-0.13%
AREA STUDIES	1040	0.98%		88	2.59%	1.60%
BIOLOGICAL SCIENCES	18066	11.78%		340	9.99%	-1.79%
BUSINESS & MANAGEMENT	5727	3.95%		134	3.94%	-0.01%
COMPUTER & INFO. SCIENCES	5206	3.86%		49	1.44%	-2.42%
ENGINEERING	15782	10.09%		98	2.88%	-7.21%
FINE & APPLIED ARTS	6639	4.97%		227	6.67%	1.70%
FOREIGN LANGUAGES	1670	1.39%		183	5.38%	3.99%
GENERAL OR UNCLASSIFIED	39807	13.75%		59	1.73%	-12.01%
INTERDISCIPLINARY STUDIES	5776	4.45%		263	7.73%	3.28%
LAW	332	0.36%		16	0.47%	0.11%
LETTERS	7694	6.53%		383	11.25%	4.72%
MATHEMATICS	2573	2.01%		36	1.06%	-0.95%
PHYSICAL SCIENCES	3336	2.40%		37	1.09%	-1.32%
PSYCHOLOGY	11374	9.07%		276	8.11%	-0.96%
SOCIAL SCIENCES	24774	20.77%		1,151	33.82%	13.05%
SOCIAL WORK & HELPING SERVICES	196	0.18%		0	0.00%	-0.18%
<b>Unique Programs:</b>						
UCB: OPTOMETRY	119	0.13%		0	0.00%	-0.13%
UCD: HOME ECONOMICS	373	0.31%		10	0.29%	-0.02%
UCD: PHYSICAL EDUCATION	139	0.11%		1	0.03%	-0.08%
UCI: JOURNALISM	2	0.00%		0	0.00%	0.00%
UCLA: NURSING	44	0.05%		0	0.00%	-0.05%
<b>Total</b>	<b>154283</b>	<b>57.42%</b>		<b>3,403</b>	<b>100.00%</b>	

Source: UCEAP, SM&C, Research July 12, 2004.

\* U.D. is "Upper Division" defined as undergraduate students of Junior or Senior Academic Class level.

\* Data for UC San Francisco, which is primarily a graduate health sciences campus, is not reported, as UCSF is not a significant source of EAP students.



Source: UCEAP, SM&C, Research July 12, 2004.

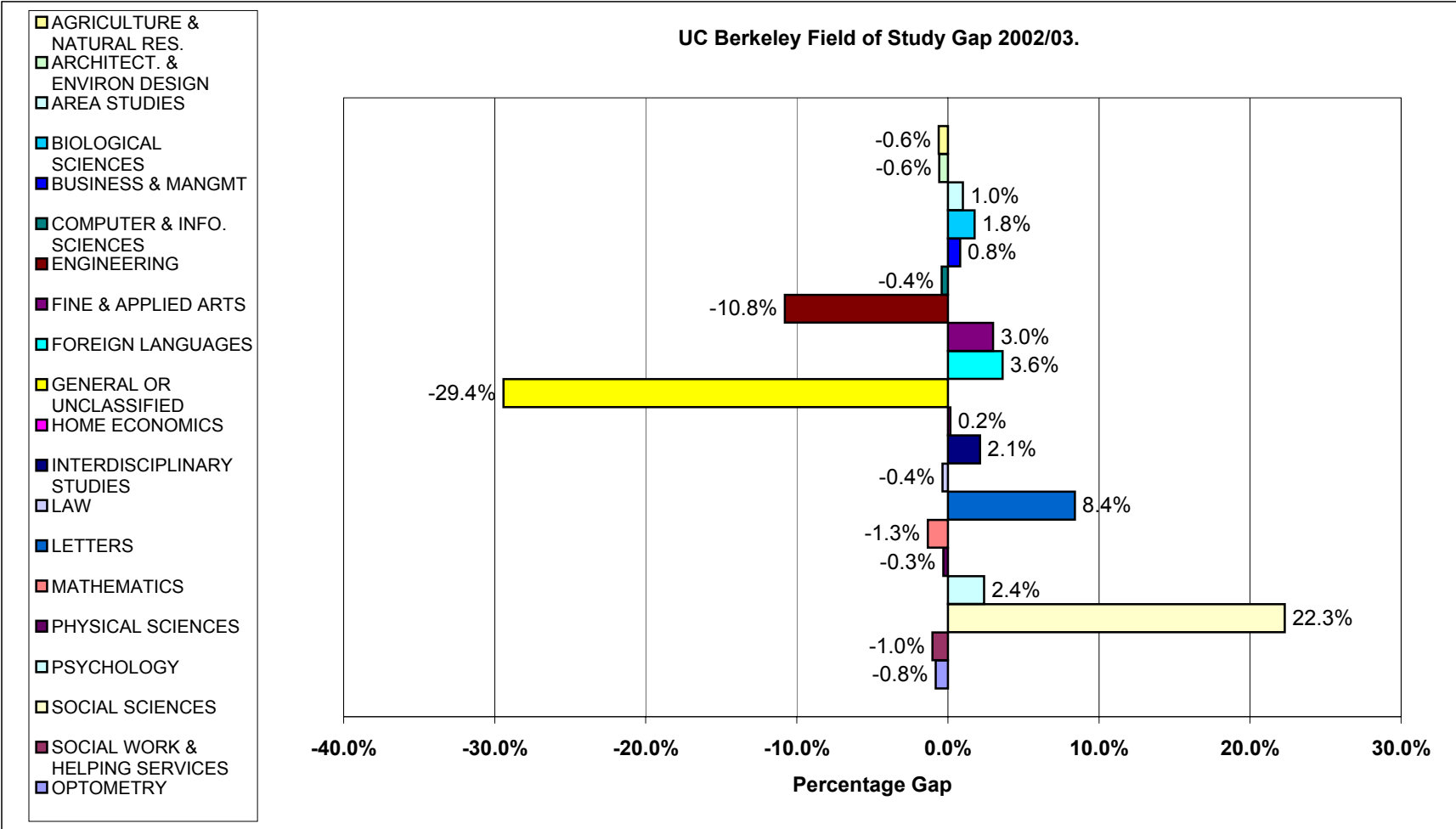
**UC Berkeley Undergraduate and EAP enrollment by Field of Study/Academic Discipline, Academic Year 2002/2003.**

<b>Subject Area</b>	<b>Total Undergrad</b>	<b>UD SA as % UD Campus Total</b>	<b>EAP UD Enrolled</b>	<b>% EAP UD in SA</b>	<b>GAP</b>
AGRICULTURE & NATURAL RESOURCES	221	0.9%	2	0.34%	-0.6%
ARCHITECTURE & ENVIRON DESIGN	645	2.6%	12	2.05%	-0.6%
AREA STUDIES	280	1.7%	16	2.74%	1.0%
BIOLOGICAL SCIENCES	1081	6.6%	49	8.39%	1.8%
BUSINESS & MANAGEMENT	463	3.0%	22	3.77%	0.8%
COMPUTER & INFORMATION SCIENCES	200	1.3%	5	0.86%	-0.4%
ENGINEERING	2978	12.7%	11	1.88%	-10.8%
FINE & APPLIED ARTS	588	3.5%	38	6.51%	3.0%
FOREIGN LANGUAGES	197	1.2%	28	4.79%	3.6%
GENERAL OR UNCLASSIFIED	11312	31.1%	10	1.71%	-29.4%
HOME ECONOMICS	0	0.0%	1	0.17%	0.2%
INTERDISCIPLINARY STUDIES	402	2.3%	26	4.45%	2.1%
LAW	259	1.6%	7	1.20%	-0.4%
LETTERS	883	5.5%	81	13.87%	8.4%
MATHEMATICS	374	2.4%	6	1.03%	-1.3%
PHYSICAL SCIENCES	425	2.0%	10	1.71%	-0.3%
PSYCHOLOGY	787	5.0%	43	7.36%	2.4%
SOCIAL SCIENCES	2431	14.9%	217	37.16%	22.3%
SOCIAL WORK & HELPING SERVICES	189	1.0%	0	0.00%	-1.0%
UNIQUE TO UCB: OPTOMETRY	119	0.8%	0	0.00%	-0.8%
<b>TOTAL CAMPUS</b>	<b>23715</b>	<b>65.8%</b>	<b>584</b>	<b>100.00%</b>	

Source: UCEAP, SM&C, Research July 12, 2004.

\* U.D. is "Upper Division" defined as undergraduate students of Junior or Senior Academic Class level.

UC Berkeley Field of Study Gap 2002/03.



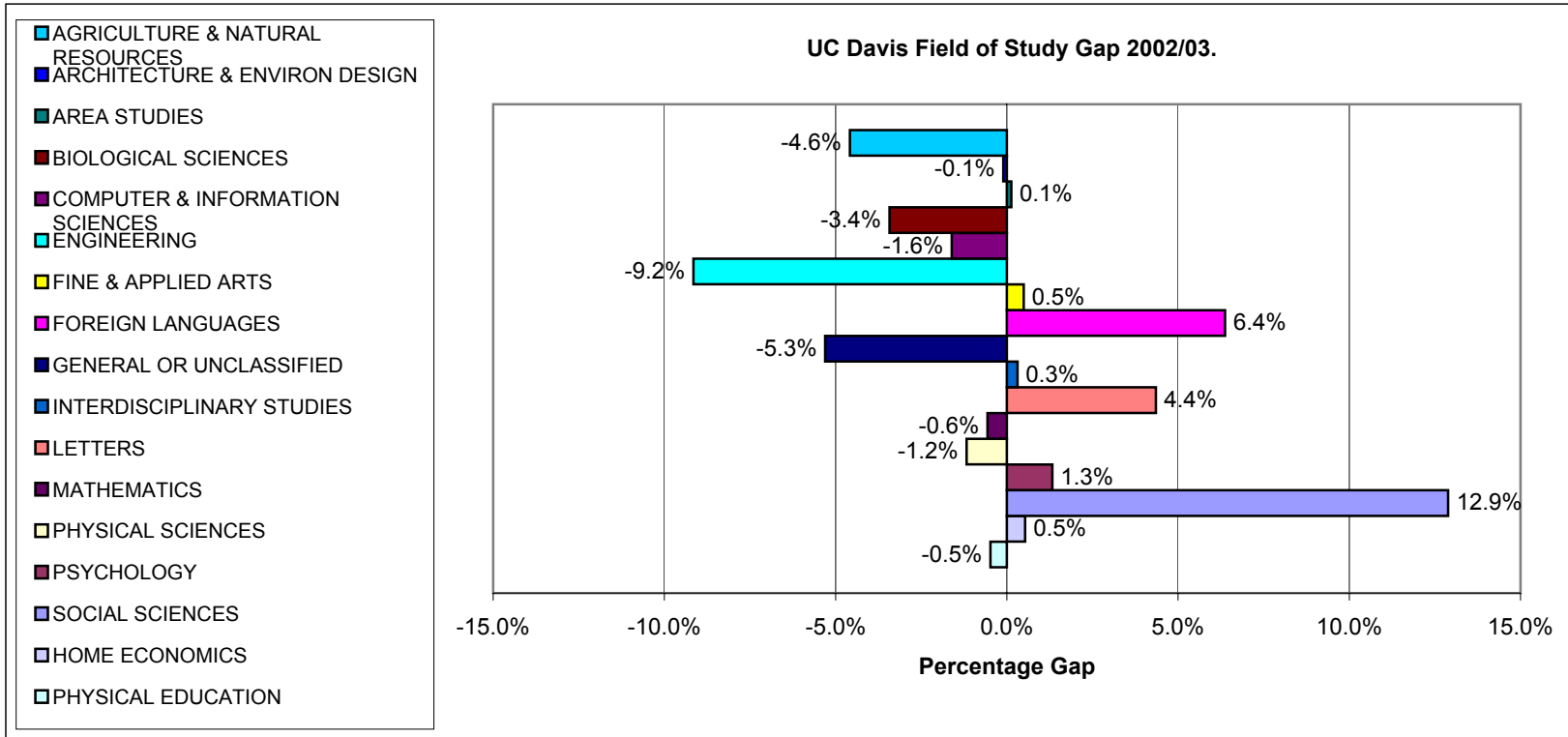
Source: UCEAP, SM&C, Research July 12, 2004.

**UC Davis Undergraduate and EAP enrollment by Field of Study/Academic Discipline, Academic Year 2002/2003.**

<b>Subject Area</b>	<b>Total Undergrad</b>	<b>UD SA as % UD Campus Total</b>	<b>EAP UD Enrolled</b>	<b>% EAP UD in SA</b>	<b>GAP</b>
AGRICULTURE & NATURAL RESOURCES	2578	14.7%	33	10.15%	-4.6%
ARCHITECTURE & ENVIRON DESIGN	53	0.4%	1	0.31%	-0.1%
AREA STUDIES	93	0.5%	2	0.62%	0.1%
BIOLOGICAL SCIENCES	3592	16.0%	41	12.62%	-3.4%
BUSINESS & MANAGEMENT	0	0	0	0.00%	0.0%
COMPUTER & INFORMATION SCIENCES	385	1.9%	1	0.31%	-1.6%
ENGINEERING	2852	11.6%	8	2.46%	-9.2%
FINE & APPLIED ARTS	386	2.0%	8	2.46%	0.5%
FOREIGN LANGUAGES	259	1.3%	25	7.69%	6.4%
GENERAL OR UNCLASSIFIED	4308	8.4%	10	3.08%	-5.3%
INTERDISCIPLINARY STUDIES	142	0.9%	4	1.23%	0.3%
LAW	0	0.0%	0	0.00%	0.0%
LETTERS	1709	9.2%	44	13.54%	4.4%
MATHEMATICS	370	1.8%	4	1.23%	-0.6%
PHYSICAL SCIENCES	455	2.1%	3	0.92%	-1.2%
PSYCHOLOGY	1749	9.4%	35	10.77%	1.3%
SOCIAL SCIENCES	3203	16.7%	96	29.54%	12.9%
SOCIAL WORK & HELPING SERVICES	0	0.0%	0	0.00%	0.0%
UNIQUE TO UCD: HOME ECONOMICS	373	2.2%	9	2.77%	0.5%
UNIQUE TO UCD: PHYSICAL EDUCATION	139	0.8%	1	0.31%	-0.5%
TOTAL CAMPUS	22646	54.3%	325	100.01%	

Source: UCEAP, SM&C, Research July 12, 2004.

\* U.D. is "Upper Division" defined as undergraduate students of Junior or Senior Academic Class level.



Source: UCEAP, SM&C, Research July 12, 2004.

**UC Irvine Undergraduate and EAP enrollment by Field of Study/Academic Discipline, Academic Year 2002/2003.**

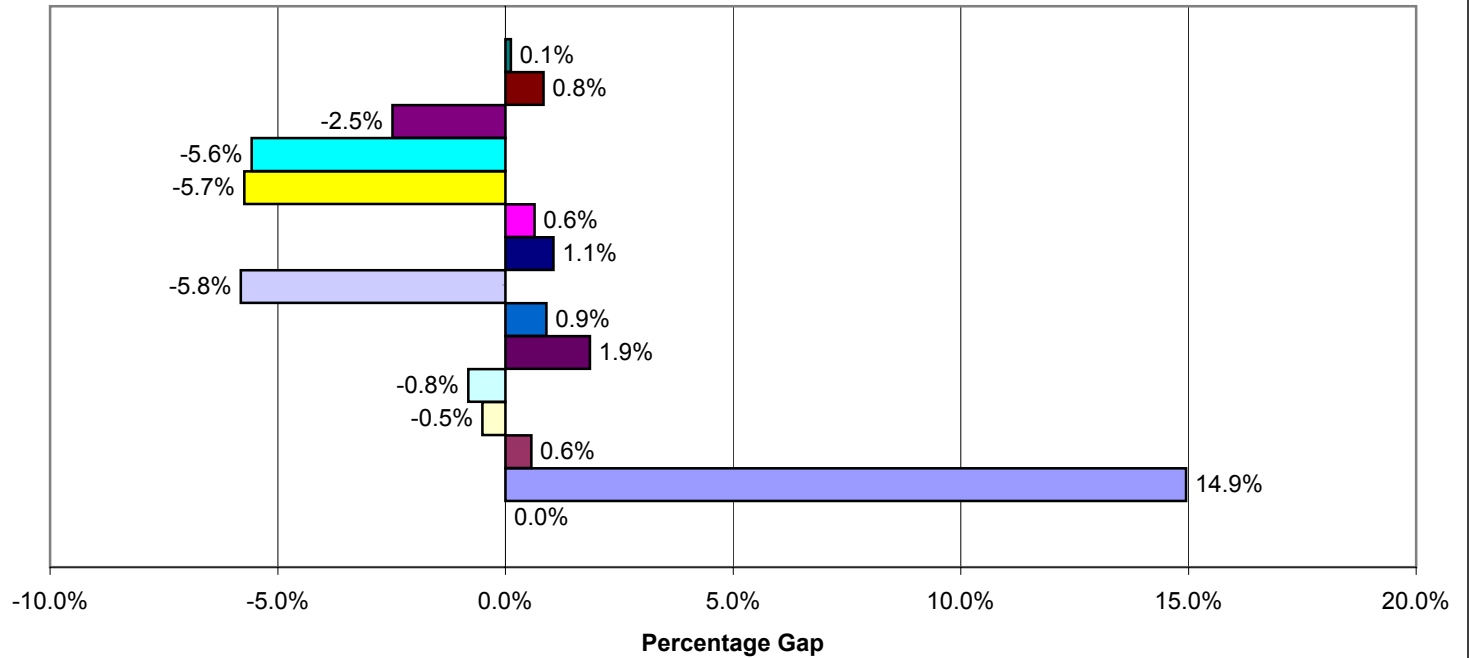
<b>Subject Area</b>	<b>Total Undergrad</b>	<b>UD SA as % UD Campus Total</b>	<b>EAP UD Enrolled</b>	<b>% EAP UD in SA</b>	<b>GAP</b>
AGRICULTURE & NATURAL RESOURCES	0	0.0%	0	0.00%	0.0%
ARCHITECTURE & ENVIRON DESIGN	117	0.9%	4	1.04%	0.1%
AREA STUDIES	71	0.5%	5	1.30%	0.8%
BIOLOGICAL SCIENCES	2876	12.9%	40	10.39%	-2.5%
BUSINESS & MANAGEMENT	0	0.0%	0	0.00%	0.0%
COMPUTER & INFORMATION SCIENCES	1832	10.5%	19	4.94%	-5.6%
ENGINEERING	2067	9.9%	16	4.16%	-5.7%
FINE & APPLIED ARTS	1095	5.9%	25	6.49%	0.6%
FOREIGN LANGUAGES	203	1.3%	9	2.34%	1.1%
GENERAL OR UNCLASSIFIED	3353	9.7%	15	3.90%	-5.8%
INTERDISCIPLINARY STUDIES	932	5.6%	25	6.49%	0.9%
LAW	0	0.0%	0	0.00%	0.0%
LETTERS	727	4.4%	24	6.23%	1.9%
MATHEMATICS	254	1.3%	2	0.52%	-0.8%
PHYSICAL SCIENCES	370	1.8%	5	1.30%	-0.5%
PSYCHOLOGY	1530	9.8%	40	10.39%	0.6%
SOCIAL SCIENCES	3750	25.6%	156	40.52%	14.9%
SOCIAL WORK & HELPING SERVICES	0	0.0%	0	0.00%	0.0%
UNIQUE TO UCI: JOURNALISM	2	0.0%	0	0.00%	0.0%
<b>TOTAL CAMPUS</b>	<b>19179</b>	<b>55.2%</b>	<b>385</b>	<b>100.00%</b>	

Source: UCEAP, SM&C, Research July 12, 2004.

\* U.D. is "Upper Division" defined as undergraduate students of Junior or Senior Academic Class level.

UC Irvine Field of Study Gap 2002/03.

- ARCHITECTURE & ENVIRON DESIGN
- AREA STUDIES
- BIOLOGICAL SCIENCES
- COMPUTER & INFORMATION SCIENCES
- ENGINEERING
- FINE & APPLIED ARTS
- FOREIGN LANGUAGES
- GENERAL OR UNCLASSIFIED
- INTERDISCIPLINARY STUDIES
- LETTERS
- MATHEMATICS
- PHYSICAL SCIENCES
- PSYCHOLOGY
- SOCIAL SCIENCES
- JOURNALISM



Source: UCEAP, SM&C, Research July 12, 2004.



UC Los Angeles Undergraduate and EAP enrollment by Field of Study/Academic Discipline, Academic Year 2002/2003.

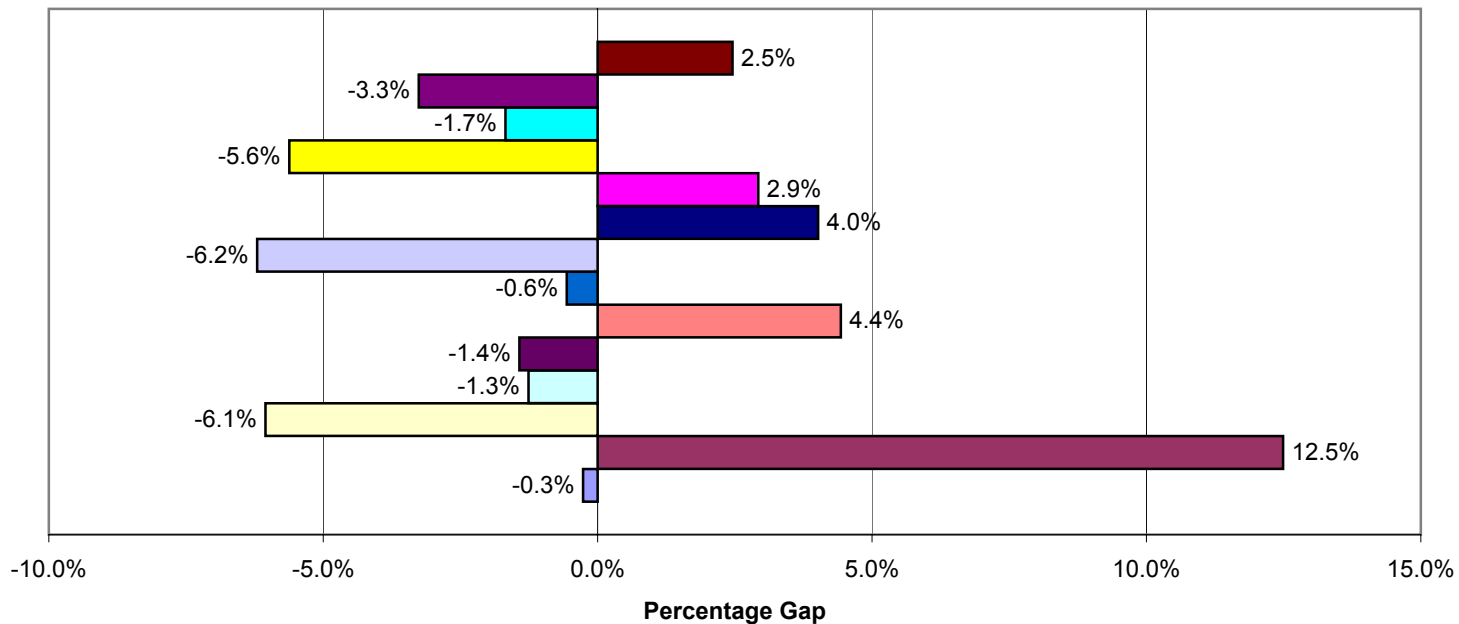
Subject Area	Total Undergrad	UD SA as % UD Campus Total	EAP UD Enrolled	% EAP UD in SA	GAP
AGRICULTURE & NATURAL RESOURCES	0	0.0%	0	0.00%	0.0%
ARCHITECTURE & ENVIRON DESIGN	0	0.0%	0	0.00%	0.0%
AREA STUDIES	287	1.5%	22	3.94%	2.5%
BIOLOGICAL SCIENCES	3514	13.6%	58	10.38%	-3.3%
BUSINESS & MANAGEMENT	0	0.0%	0	0.00%	0.0%
COMPUTER & INFORMATION SCIENCES	340	1.7%	0	0.00%	-1.7%
ENGINEERING	2293	9.7%	23	4.11%	-5.6%
FINE & APPLIED ARTS	1226	4.8%	43	7.69%	2.9%
FOREIGN LANGUAGES	388	1.9%	33	5.90%	4.0%
GENERAL OR UNCLASSIFIED	4405	7.8%	9	1.61%	-6.2%
INTERDISCIPLINARY STUDIES	413	1.6%	6	1.07%	-0.6%
LAW	0	0.0%	0	0.00%	0.0%
LETTERS	2099	10.2%	82	14.67%	4.4%
MATHEMATICS	613	2.7%	7	1.25%	-1.4%
PHYSICAL SCIENCES	459	2.0%	4	0.72%	-1.3%
PSYCHOLOGY	2560	12.3%	35	6.26%	-6.1%
SOCIAL SCIENCES	6258	29.9%	237	42.40%	12.5%
SOCIAL WORK & HELPING SERVICES	0	0.0%	0	0.00%	0.0%
UNIQUE TO UCLA: NURSING	44	0.3%	0	0.00%	-0.3%
TOAL CAMPUS	24899	67.0%	559	100.00%	

Source: UCEAP, SM&C, Research July 12, 2004.

\* U.D. is "Upper Division" defined as undergraduate students of Junior or Senior Academic Class level.

UC Los Angeles Field of Study Gap 2002/03.

- AREA STUDIES
- BIOLOGICAL SCIENCES
- COMPUTER & INFO. SCIENCES
- ENGINEERING
- FINE & APPLIED ARTS
- FOREIGN LANGUAGES
- GENERAL OR UNCLASSIFIED
- INTERDISCIPLINARY STUDIES
- LETTERS
- MATHEMATICS
- PHYSICAL OR UNCLASSIFIED
- PSYCHOLOGY
- SOCIAL SCIENCES
- NURSING



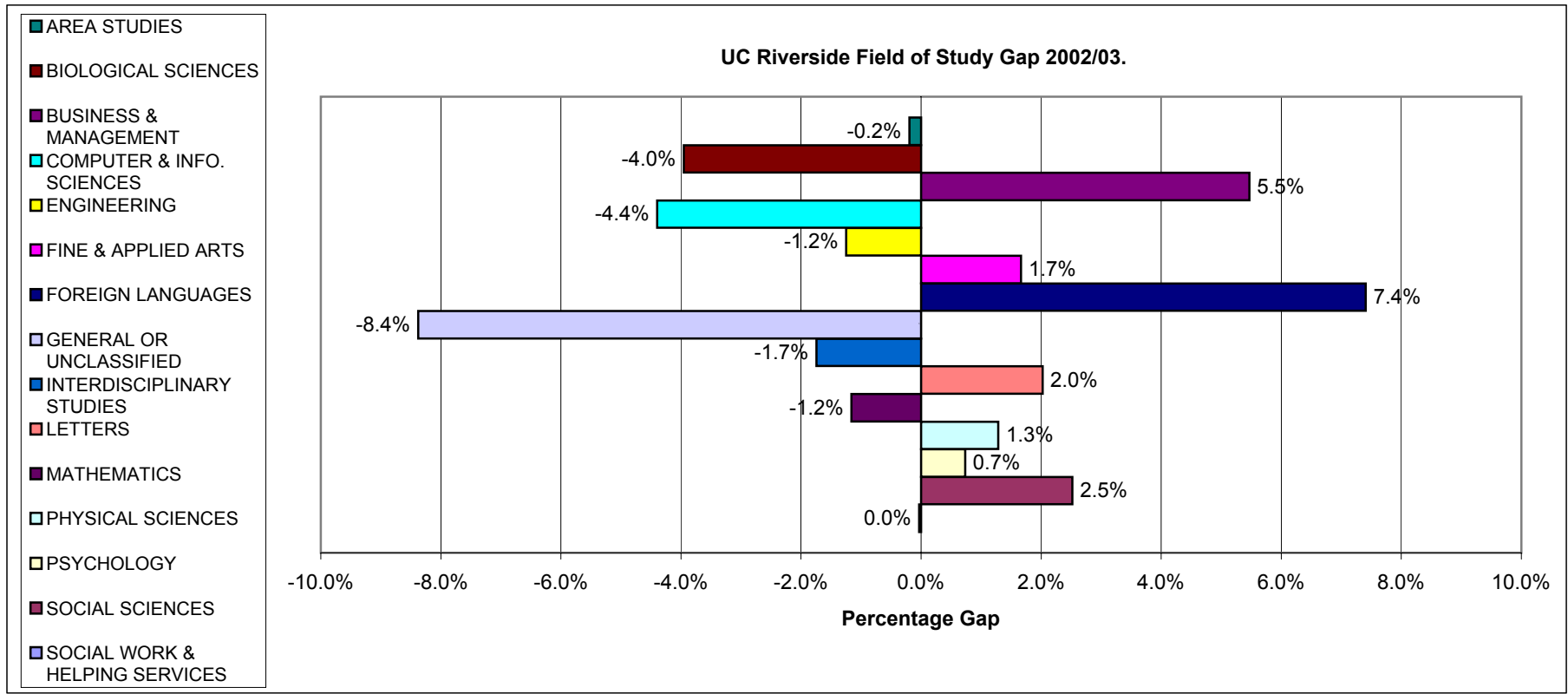
Source: UCEAP, SM&C, Research July 12, 2004.

**UC Riverside Undergraduate and EAP enrollment by Field of Study/Academic Discipline, Academic Year 2002/2003.**

<b>Subject Area</b>	<b>Total Undergrad</b>	<b>UD SA as % UD Campus Total</b>		<b>EAP UD Enrolled</b>	<b>% EAP UD in SA</b>	<b>GAP</b>
AGRICULTURE & NATURAL RESOURCES	0	0.0%		0	0.00%	0.0%
ARCHITECTURE & ENVIRON DESIGN	0	0.0%		0	0.00%	0.0%
AREA STUDIES	39	0.2%		0	0.00%	-0.2%
BIOLOGICAL SCIENCES	1784	10.3%		8	6.35%	-4.0%
BUSINESS & MANAGEMENT	2720	23.1%		36	28.57%	5.5%
COMPUTER & INFORMATION SCIENCES	837	7.6%		4	3.17%	-4.4%
ENGINEERING	883	4.4%		4	3.17%	-1.2%
FINE & APPLIED ARTS	416	3.1%		6	4.76%	1.7%
FOREIGN LANGUAGES	142	1.3%		11	8.73%	7.4%
GENERAL OR UNCLASSIFIED	2636	9.2%		1	0.79%	-8.4%
INTERDISCIPLINARY STUDIES	750	7.3%		7	5.56%	-1.7%
LAW	0	0.0%		0	0.00%	0.0%
LETTERS	555	5.1%		9	7.14%	2.0%
MATHEMATICS	221	2.0%		1	0.79%	-1.2%
PHYSICAL SCIENCES	213	1.9%		4	3.17%	1.3%
PSYCHOLOGY	989	7.2%		10	7.94%	0.7%
SOCIAL SCIENCES	1930	17.3%		25	19.84%	2.5%
SOCIAL WORK & HELPING SERVICES	7	0.0%		0	0.00%	0.0%
<b>TOTAL CAMPUS</b>	<b>14122</b>	<b>43.9%</b>		<b>126</b>	<b>100.00%</b>	

Source: UCEAP, SM&C, Research July 12, 2004.

\* U.D. is "Upper Division" defined as undergraduate students of Junior or Senior Academic Class level.



Source: UCEAP, SM&C, Research July 12, 2004.

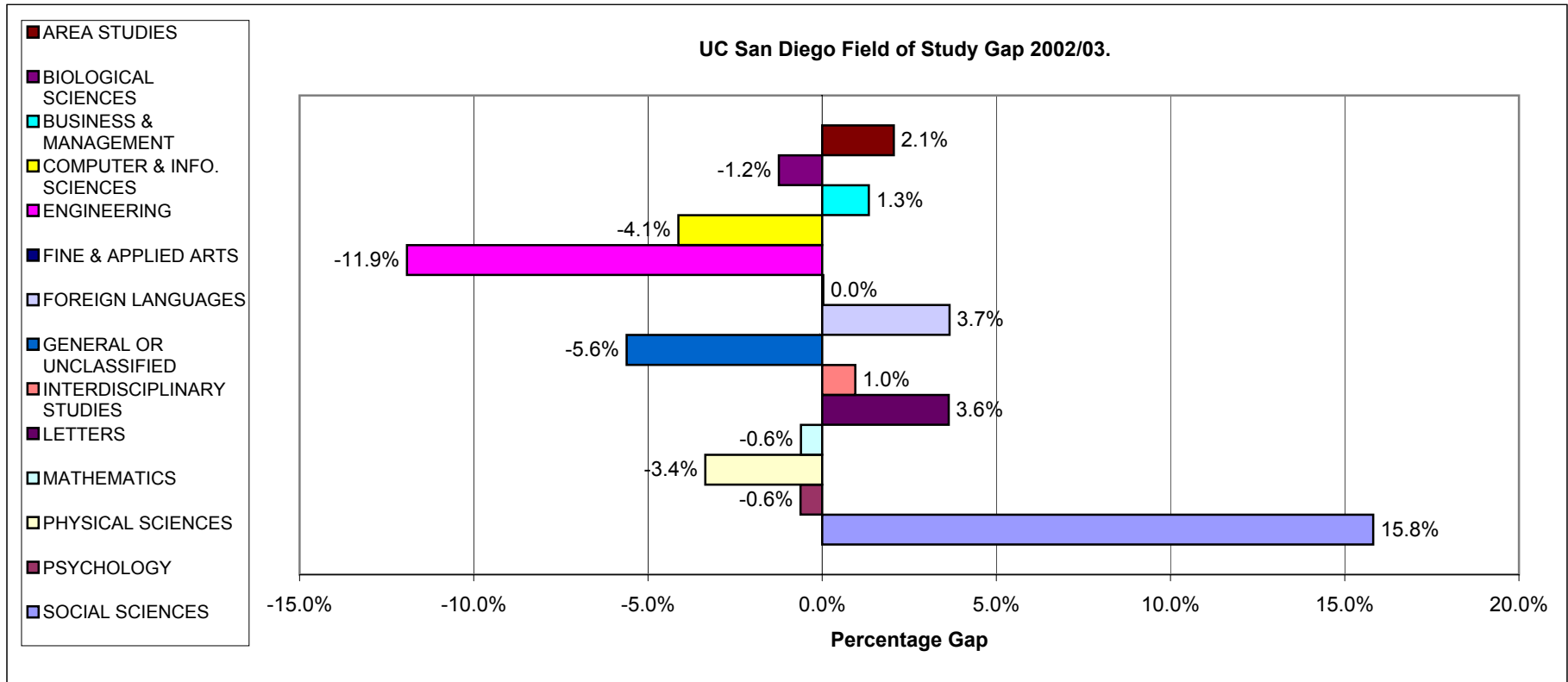
**UC San Diego Undergraduate and EAP enrollment by Field of Study/Academic Discipline, Academic Year 2002/2003.**

<b>Subject Area</b>	<b>Total Undergrad</b>	<b>UD SA as % UD Campus Total</b>	<b>EAP UD Enrolled</b>	<b>% EAP UD in SA</b>	<b>GAP</b>
AGRICULTURE & NATURAL RESOURCES	0	0.0%	0	0.00%	0.0%
ARCHITECTURE & ENVIRON DESIGN	0	0.0%	0	0.00%	0.0%
AREA STUDIES	69	0.4%	11	2.46%	2.1%
BIOLOGICAL SCIENCES	2948	15.5%	64	14.29%	-1.2%
BUSINESS & MANAGEMENT	659	4.5%	26	5.80%	1.3%
COMPUTER & INFORMATION SCIENCES	782	5.0%	4	0.89%	-4.1%
ENGINEERING	3435	17.5%	25	5.58%	-11.9%
FINE & APPLIED ARTS	914	5.8%	26	5.80%	0.0%
FOREIGN LANGUAGES	119	0.8%	20	4.46%	3.7%
GENERAL OR UNCLASSIFIED	2857	5.8%	1	0.22%	-5.6%
INTERDISCIPLINARY STUDIES	325	1.7%	12	2.68%	1.0%
LAW	0	0.0%	0	0.00%	0.0%
LETTERS	473	3.1%	30	6.70%	3.6%
MATHEMATICS	454	2.6%	9	2.01%	-0.6%
PHYSICAL SCIENCES	743	3.8%	2	0.45%	-3.4%
PSYCHOLOGY	1777	11.8%	50	11.16%	-0.6%
SOCIAL SCIENCES	3504	21.7%	168	37.50%	15.8%
SOCIAL WORK & HELPING SERVICES	0	0.0%	0	0.00%	0.0%
<b>TOAL CAMPUS</b>	<b>19059</b>	<b>57.7%</b>	<b>448</b>	<b>100.00%</b>	

Source: UCEAP, SM&C, Research July 12, 2004.

\* U.D. is "Upper Division" defined as undergraduate students of Junior or Senior Academic Class level.

\*Omitted 6 "Special" status/academic class level students from total enrolled undergraduates.



Source: UCEAP, SM&C, Research July 12, 2004.

**UC Santa Barbara Undergraduate and EAP enrollment by Field of Study/Academic Discipline, Academic Year 2002/2003.**

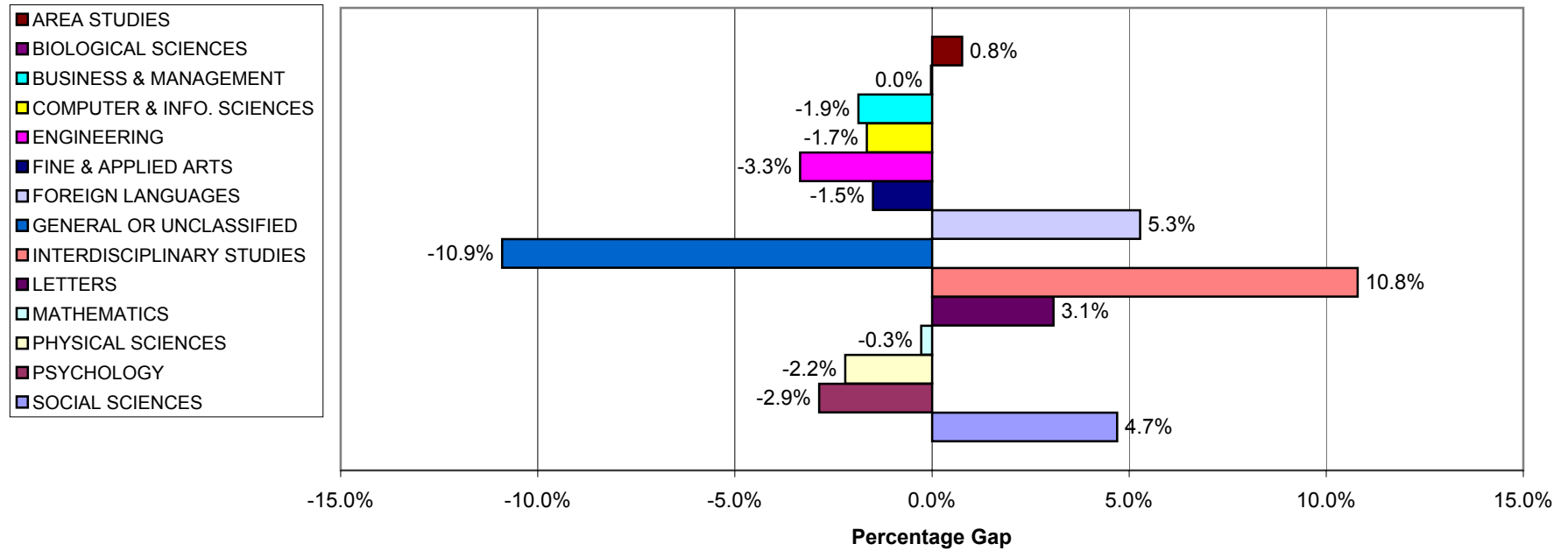
<b>Subject Area</b>	<b>Total Undergrad</b>	<b>UD SA as % UD Campus Total</b>	<b>EAP UD Enrolled</b>	<b>% EAP UD in SA</b>	<b>GAP</b>
AGRICULTURE & NATURAL RESOURCES	0	0.0%	0	0.00%	0.0%
ARCHITECTURE & ENVIRON DESIGN	0	0.0%	0	0.00%	0.0%
AREA STUDIES	46	0.4%	6	1.14%	0.8%
BIOLOGICAL SCIENCES	1713	9.3%	49	9.30%	0.0%
BUSINESS & MANAGEMENT	1885	11.4%	50	9.49%	-1.9%
COMPUTER & INFORMATION SCIENCES	534	3.0%	7	1.33%	-1.7%
ENGINEERING	1129	5.2%	10	1.90%	-3.3%
FINE & APPLIED ARTS	1175	7.4%	31	5.88%	-1.5%
FOREIGN LANGUAGES	262	1.7%	37	7.02%	5.3%
GENERAL OR UNCLASSIFIED	3626	11.7%	4	0.76%	-10.9%
INTERDISCIPLINARY STUDIES	2359	15.6%	139	26.38%	10.8%
LAW	0	0.0%	0	0.00%	0.0%
LETTERS	791	5.6%	46	8.73%	3.1%
MATHEMATICS	223	1.4%	6	1.14%	-0.3%
PHYSICAL SCIENCES	491	3.3%	6	1.14%	-2.2%
PSYCHOLOGY	1149	7.2%	23	4.36%	-2.9%
SOCIAL SCIENCES	2322	16.7%	113	21.44%	4.7%
SOCIAL WORK & HELPING SERVICES	0	0.0%	0	0.00%	0.0%
<b>TOTAL CAMPUS</b>	<b>17705</b>	<b>55.5%</b>	<b>527</b>	<b>100.00%</b>	

Source: UCEAP, SM&C, Research July 12, 2004.

\* U.D. is "Upper Division" defined as undergraduate students of Junior or Senior Academic Class level.

\*Total Omit 9 Unclassified Post-Bacc., but not Grad students and 12 Post-Bacc. Education students, not Grad. Students.

UC Santa Barbara Field of Study Gap 2002/03.



Source: UCEAP, SM&C, Research July 12, 2004.



**UC Santa Cruz Undergraduate and EAP enrollment by Field of Study/Academic Discipline, Academic Year 2002/2003.**

<b>Subject Area</b>	<b>Total Undergrad</b>	<b>UD SA as % UD Campus Total</b>	<b>EAP UD Enrolled</b>	<b>% EAP UD in SA</b>	<b>GAP</b>
AGRICULTURE & NATURAL RESOURCES	0	0.0%	0	0.00%	0.0%
ARCHITECTURE & ENVIRON DESIGN	0	0.0%	0	0.00%	0.0%
AREA STUDIES	155	2.3%	26	5.79%	3.4%
BIOLOGICAL SCIENCES	558	8.3%	31	6.90%	-1.4%
BUSINESS & MANAGEMENT	0	0.0%	0	0.00%	0.0%
COMPUTER & INFORMATION SCIENCES	296	4.4%	9	2.00%	-2.4%
ENGINEERING	145	2.2%	1	0.22%	-1.9%
FINE & APPLIED ARTS	839	10.2%	50	11.14%	0.9%
FOREIGN LANGUAGES	100	1.5%	20	4.45%	3.0%
GENERAL OR UNCLASSIFIED	7310	25.0%	9	2.00%	-23.0%
INTERDISCIPLINARY STUDIES	453	6.7%	44	9.80%	3.1%
LAW	73	1.1%	9	2.00%	0.9%
LETTERS	457	6.6%	67	14.92%	8.3%
MATHEMATICS	64	0.9%	1	0.22%	-0.7%
PHYSICAL SCIENCES	180	2.7%	3	0.67%	-2.0%
PSYCHOLOGY	833	8.7%	40	8.91%	0.2%
SOCIAL SCIENCES	1376	19.3%	139	30.96%	11.6%
SOCIAL WORK & HELPING SERVICES	0	0.0%	0	0.00%	0.0%
<b>TOTAL CAMPUS</b>	<b>12839</b>	<b>49.2%</b>	<b>449</b>	<b>100.00%</b>	

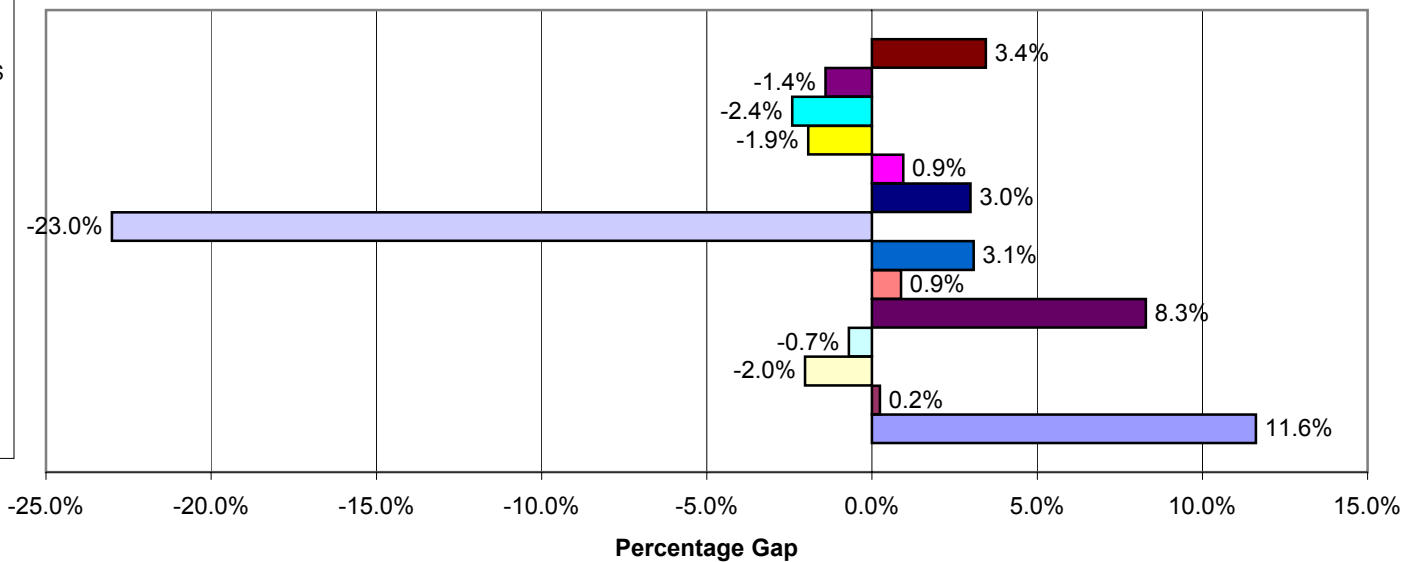
Source: UCEAP, SM&C, Research July 12, 2004.

\* U.D. is "Upper Division" defined as undergraduate students of Junior or Senior Academic Class level.

\*Omitting 5 "special" status General or Unclassified students and 21 "limited" status Interdisciplinary Studies students that are not grad students.

UC Santa Cruz Field of Study Gap 2002/03.

- AREA STUDIES
- BIOLOGICAL SCIENCES
- COMPUTER & INFO. SCIENCES
- ENGINEERING
- FINE & APPLIED ARTS
- FOREIGN LANGUAGES
- GENERAL OR UNCLASSIFIED
- INTERDISCIPLINARY STUDIES
- LAW
- LETTERS
- MATHEMATICS
- PHYSICAL SCIENCES
- PSYCHOLOGY
- SOCIAL SCIENCES



Source: UCEAP, SM&C, Research July 12, 2004.